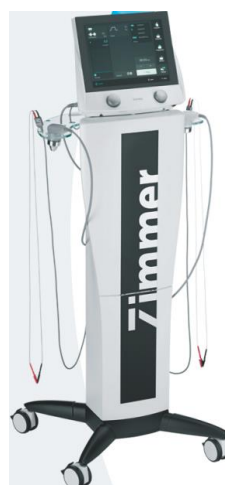


PHYSIOTHERAPY & REHAB

1. Interferential, TENS, Electro-stimulator, Combination Therapy

PhySys= Ultimate Combination Therapy with **12" colour touch screen** from Zimmer Germany



All low & medium frequency currents & multi frequency U/s

2 Independent Channels- Parallel – Separate- Alternate with Channel Inversion

Screen also shows the effect of the particular current form for e.g. Analgesia, Hypermia, Relaxation, Strengthening etc.

Current for Sports Rehab- General Muscle Strengthening, Improvement of muscle endurance, Strengthening of fast-twitch fibre muscles, endurance training, fast-twitch fibre muscle training, Explosive strength training, Sequence training- warm up- train-relaxation etc.

Special Treatment- Vein Strengthening, Psoriasis, Electro-Sleep, Lymph Oedema and Hyperhidrosis etc

Currents for Urology/ Gynaecology- Pelvic floor stimulation, Incontinence Treatment

Paralysis diagnosis & Paralysis treatment

Lange Test, Neofaradic test, Fischgold test

Rheobase, Chronaxie, accommodation quotient and I/T curve plotting

Ultrasound:

- Sono Swing - Choice of penetration depth (**Zimmer Patent**)
- Choice of Mechanical & Thermal effect

SD-card for - Free memory entries: therapy/ diagnostic/ Error log / Firmware-Update

Combined Treatment Ultrasound + Electro-stimulation for-

Hyperaemia, metabolism stimulation, pain control, muscle relaxation, trigger point treatment

SOLEO LINE- COMBO, Electrotherapy & Ultrasound **8" colour touch screen** from Zimmer




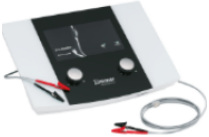

Soleo SonoStim-Combination Therapy = Soleo Galva + Soleo Sono

Dual Channel for All medium & Low frequency currents & multi frequency Ultrasound
All low & medium frequency currents & multi frequency Ultrasound Therapy

2 Channels- Parallel – Separate- Alternate with Channel Inversion

Screen also shows the effect of the particular current form for e.g. Analgesia, Hypermia, Relaxation, Strengthening etc.

Current for Sports Rehab- General Muscle Strengthening, Improvement of muscle endurance, Strengthening of fast-twitch fibre muscles, endurance training, fast-twitch fibre muscle training, Explosive strength training, Sequence training- warm up- train-

	<p>relaxation etc.</p> <p>Currents for Urology/ Gynaecology- Pelvic floor stimulation, Incontinence</p> <p>Paralysis diagnosis & Paralysis treatment</p> <p>SD-card for - Free memory entries: therapy/ diagnostic/ favourites/Error log /Update</p> <p>Combined Treatment Ultrasound + Electro-stimulation for- Hyperaemia, metabolism stimulation, pain control, muscle relaxation, trigger point treatment</p>
	<p>Soleo Galva Complete Electrotherapy - Dual Channel for 21 medium & Low frequency currents</p>
	<p>Soleo Vaco S Vacuum Therapy unit for Soleo Galva & Sonostim</p> <p>Pulsed and continuous Vacuum therapy for ease of electrode placing and rhythmic massage effects.</p>

2. Ultrasound Therapy

SOLEO SONO Ultrasound **8" colour touch screen** from **Zimmer**



Soleo Sono Ultrasound Therapy unit - Multi Frequency U/s Head offering choice of penetration

Ultrasound: **Zimmer Patent** 5 Choice of penetration depth



Ultrasound Frequency of 0.8 MHz for deep and 2.4 MHz for superficial effects and possibility of combining two frequencies in single treatment for multiple choice of penetration depth.



Ultrasound head has audio & Visual contact feedback with coupling % displayed on screen as well

Ultrasound head offers under water treatment option on screen

SD Card for memory, software upgrade and service facility



Sono One Ultrasonic therapy unit from Zimmer Medizin Germany Features

•Multi frequency, 1 MHz: deep effect / 3 MHz: superficial effect

•Transducer head with visual contact indicator.

•Colour touch screen monitor for better control.

•Continuous & Pulsed : Pulse frequencies 10, 20 , 50, & 100 Hz

3. Multiwavelength High Power Laser Therapy Unit



OPTON PRO 25W, 15W & 10W, therapeutic Laser for deep penetration & instant effect from Zimmer Germany

12" Colour touch screen

Operating mode - Continuous, Serial pulse, Burst, Single pulse

Integrated Visual analogue scale- VAS provides information about the patient's pain perception.

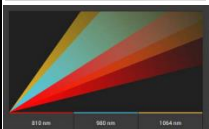
Thermal threshold test assists with calculation of the required dosage in combination with the skin type and the required penetration depth & prevents overdosing



3 Wave Lengths 810nm, 980nm, 1064nm

Therapy with 3 wavelengths enables stimulation of different target sites: Pain receptors at the surface as well as deeper tissue structures are stimulated at the same time.

Wavelength of 1064 nm having lowest scatter in the tissue promotes penetration of the radiation into the deep layers of tissue.



OPTON PRO 10W

2 Wave Lengths 810nm & 980nm



Therapy Assistant Mode-

It's Easy - Select body region > Select skin type > Determine therapy area

By determining the therapy area, the course of the disease and the skin type, the following information is automatically saved:

- ✓ Program parameters
- ✓ Amount of energy to be applied
- ✓ Therapy time



Laser applicator with manual switch - the laser light is now emitted continuously, without any further action needed

Integrated Skin temperature measurement sensor enables the skin temperature to be monitored during the therapy.

4. Cryoflow Cryotherapy Unit



**Cryo 7 & Cryo 6 – The new standard in cold air therapy, from Zimmer Germany ,
“World largest Manufacturer of Cryo”**

- ÿ Brilliant, high-resolution, 10-inch touch display.
- ÿ Individual programmes can be stored.
- ÿ Optional supporting arm facilitates hands-free operation.
- ÿ Glass shelf plate for use as a tray for additional devices.

-35 °C Cold Air Cryotherapy for Pain and Inflammatory Treatment

Indications:

- Painful acute and chronic conditions of the musculoskeletal system**
- Pain relief in rheumatic disorders**
- Neurological disorders, reduction in spasticity**
- Prevention of edema and hematomas**
- Targeted treatment of muscle trigger points in combination with stretching.**
- Vascular training,**
- As pre-treatment of CPD (complex physical decongestion) in chronic lymph edema**
- Glass touch pad. No Consumables**

5. Focussed Shockwave Therapy Unit



**enShock –Piezoelectrically Focused shock wave Therapy
(ESWT) with focus on healing from Zimmer Germany**

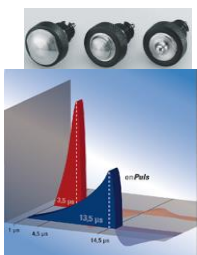
- Long-term pain relief
- Positive effect on inflammatory reactions in musculoskeletal discomfort/conditions,
- Excellent effects on bone healing, especially in non-healing fractures and pseudo-arthritis
- Elimination of calcification in tendons

With 8 different gel pads for various depths of Penetration up to 45 mm

11” Colour touch screen



6. Radial Shockwave Therapy Unit



12" Colour touch screen EnPuls Pro from Zimmer Germany

Radial Shock Wave Therapy unit with **electro-magnetic** shock generation & Colour touch screen for ease of operation

Special Features

- ✓ Ballistic radial shockwave Electromagnetic generator
 - ✓ Efficient down to 35 mm depth
 - ✓ Radial tissue dispersion
 - ✓ High mass projectile
- **Ports for two hand pieces**
 - Energy levels from 60 to 185 mJ (equivalent 1- 5 bar)
 - Pulse frequencies up to 22 Hz & Burst mode for Trigger Points

Less pain, same energy – enPuls soft shot technology

Medical effects

- ✓ Immediate, sustaining pain relief
- ✓ Increased range of mobility
- ✓ Controlled normalized muscle tone
- ✓ Change of membrane permeability



8" Colour touch screen enPuls 2 from M/S Zimmer Germany

Portable Radial Shock Wave Therapy unit with **electro-magnetic** shock generation & Colour touch screen for ease of operation

Less pain, same energy – enPuls soft shot technology

- Energy levels from 60 to 185 mJ (equivalent 1-5 bar)
- Pulse frequencies from 1 to 22 Hz
- Indication menu with preset treatment protocols

7. High Energy Inductive Therapy- Magneto-therapy @ 3 Tesla Power

Power of MRI for Physiotherapists **EmField Therapy Unit @ 3 Tesla** from Zimmer Germany



Exposure to natural energy fields is a requirement of human life. These energy fields interact with our cells, and are necessary for homeostasis & maintaining our bodies at an optimal level.

Zimmer Medizin Systeme GmbH Germany introduces High Energy Inductive Therapy unit "**emFieldPro**" for healing in a natural way by Earth's magnetic field (**EmField Therapy**)

The **emFieldPro** generates a magnetic field of **3 Tesla**, which is about 600 times stronger than a normal magnet bar.

This strong magnetic field stimulates nerve cells, muscles, and blood vessels consequently as this application of energy results in a physiological change and/or stimulation which is used to achieve therapeutic effects.



EmField Therapy ADVANTAGES:

- Non invasive,
- Totally safe procedure applied from distance without contact
- Easy and fast application even over clothing
- Short treatment duration
- Low operation cost without any consumables



EmField Therapy offers a safer and more comfortable alternative for urinary incontinence to prior treatments.

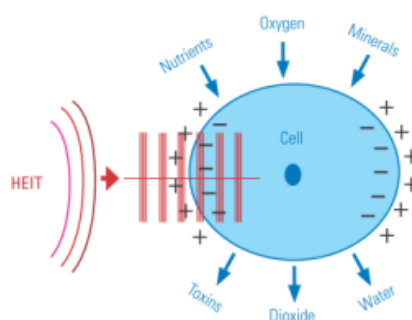
EmField Therapy improves sports performance, and simply helps to maintain good health.



EmField Therapy stimulates muscles, connective tissues, intestines, tendons and cartilage, the brain and peripheral nerve sites.

INDICATIONS:

Spinal Injuries/Disorders,
 Chronic/Acute Lumbago
 Chronic/Acute Ischialgia, Spondylitis,
 Nerve Disorders, Damaged Peripheral
 Nerves, Degenerative Arthritis,
 Rheumatoid Arthritis
 Cervical Syndrome, Frozen Shoulder,
 Prostate Pain



8. Hands Free TECAR Therapy



ThermoTK, operating at frequencies of **460 kHz and 540 kHz**, lies in the lower region of the high-frequency treatment.

ThermoTK is a long-wave therapy device.

Indications: • Pain Management • Acute -and Chronic Pain • Inflammations • Improves blood circulation • Muscle relaxation • Hypertonic muscle relaxation • Post-training regeneration • Trigger points

Treatment Modes:

Active: (optional with 2 applicators)

- Continuous mode with 460 or 540 kHz
- Pulsed mode with 460 or 540 kHz
- Alternation between 460 and 540 kHz in continuous mode

Passive, hands free (always resistive mode)

9. Inductive Shortwave Diathermy



Thermo Pro - Modern Shortwave Therapy Unit - From Zimmer Germany

Solid State Shortwave Diathermy for trouble free operation.

On screen coupling display ensures optimum energy transfer


Pre programmed indication menu as per body area and facility of storing own programs in memory.

Inductive Coil based Circuplode for radiations free Treatment.

Medical effectiveness

- Hyperaemia, Muscle relaxation, Metabolism boosting, Re-absorption promotion

10.EMG Biofeedback System/ Pelvic Floor REHAB



The image shows the MyoPlus device, a computer monitor displaying a graph, and a software interface with various icons and graphs. The software interface includes a 'Welcome!' screen with icons for TENS, NMES, FES, EMG, ETS, and Settings. Below the icons are two graphs: 'Work / Rest EMG' and 'EMG Triggered Stimulation (ETS)'. The 'Work / Rest EMG' graph shows a red line representing muscle activity over time, with vertical bars indicating rest periods. The 'EMG Triggered Stimulation (ETS)' graph shows a red line representing muscle activity, with vertical bars indicating stimulation periods triggered by the muscle activity.

MyoPlus, from Verity Medical U.K
2 Channel EMG and 4 Channel NMES + ETS
Successfully used to treat conditions including Incontinence, Patello-fermoral Pain, Myofascitis, Myofacial Pain, Phantom Limb Pain, Neck & Shoulder Girdle Pain and Repetitive Strain Injury.
Pre-set programs for Neuromuscular Rehab, Sports Rehab, Urology/ Gynaecology

EMG Triggered Stimulation mode (ETS) - is especially useful for stroke rehabilitation and Pelvic Muscle improvement. ETS is a combination of voluntary contractions with stimulation.
The graph shows the muscular eort and the stimulation is triggered automatically to support the effort.
Produces and prints comprehensive patient progress reports

- EMG Range: Up to 2000 μV RMS (continuous)
- Sensitivity: 0.1 μV RMS
- Selectable Band pass filter – Wide & Narrow
- Work / Rest periods: Up to 99 seconds
- Number of Trials: Up to 99

STIM (Neuromuscular Stimulation)
Urinary Incontinence

11. Balance Evaluation & Training System

Humac Balance - computerized Balance Measurement and Training System M/s CSMI Solutions, USA



The HUMAC Balance System includes the following Measurement & Training Routines: Random Motion, Limits of Stability, M-CTSIB, Centre of Pressure, Weight Shift, Curves, Roadway, Weight Bearing

- **Limits of Stability**- the ROM protocol exercise measures the maximum sway and (a) symmetry of the movement.
- **Centre of Pressure**- to establish and document if a subject is at increased risk of falling.
- **Weight Shift** - Patients must control their centre of gravity and shift their weight back and forth between two targets
- **Weight Bearing**- for bilateral comparison



MODIFIED CLINICAL TEST OF SENSORY ORGANIZATION AND BALANCE (MCTSIB)- measure a person's ability to maintain equilibrium on a firm surface and a soft surface with eyes open and eyes closed.



The HUMAC provides numerical results for torque, position, and time data & reports parameters: •Directional Control, •Stability Index, •Sway Index, •Peak Force, •Time to Peak Torque, •Time Peak Torque Held, •Time to Half Peak Torque, •Percent on Target • Coefficient of Variation, •Maximum Deviation, •Coefficient of Variance

CLINIMETRIC BALANCE SYSTEM

Sensbalance MiniBoard - with Measure, Exercise and Game Software

Collect data regarding your balance & core stability training and visualize progression in time.



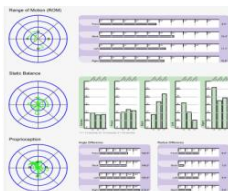
Range of Motion- Measures max sway and asymmetry of movement.

Static Balance- To document if a subject is at increased risk of falling

Proprioception- Subjects with pathologies affecting somatosensory feedback (like stroke, peripheral neuropathies and others)

Reaction- To quantify the subject's ability to quickly and accurately shift his/her body weight to the desired position

Coordination- Data are recorded during a controlled and smooth movement along the FRONT-BACK axis or the LEFT-RIGHT axis.



Miniboard with BMS, 10deg tilting acc, balance level med and farm game

12. Cervical ROM Evaluation & Training System

3D CERVICAL TRAINER



"Sens-coordination 3D Cervical Trainer with Measure, Exercise and Game Software Including Max ROM test and JPE test by **M/s. Sensamove, The Netherlands**
The product is worn with an headband and measures all spatial movements of the head:

- Cranio-cervical Flexion and Extension, Lateral Flexion, Rotation
Protraction and Retraction

Targeting: Arm, neck, shoulder complaints, Postural control Whiplash, Degenerative diseases, Vertebral dysfunction, Dystrophy

13. Postural Evaluation & Training System

POSTURE TRAINER



Sensbalance Therapy Cushion

Balance, reactive power and coordination are trained in both standing and sitting positions.

The analysis software allows to help the patient learn various pelvic movements and to increase mobility in the lower back area.

Also **learn how to reach, use and train the smaller muscles around the spinal column instead of the larger muscles.**

The Sensbalance Therapy Cushion can be used for: pelvic problems, lower back problems, regain control and feel in the lower back, posture correction, balance, and relaxation and concentration exercises.

14.Active Passive Trainer for Upper & Lower

MOVEMENT THERAPY (ACTIVE PASSIVE THERAPY)



Professional Movement Therapy Unit- Stimulates the metabolism, helps strengthening muscles, helps bone density and enhance physical & mental well being. The medBike in Passive Mode helps to loosen and strengthen muscles and reduce spasticity.

Motion training is also highly effective in assisting neurological rehab.

Active Mode- Based on user strength input

Passive Mode- Based on Motorize movement output

Dual Mode- Combination of user strength input & motor output

The big 10" touch screen TFT display

- Speed control 10-90 RPM

- Watt control 1- 120 Watt



Upper Trainer- simple add-on for arms, shoulders and back training

15. Cervical & Lumbar Traction System

LUMBER & CERVICAL TRACTION



clTrac - Cervical & Lumbar Traction System

A safe alternative to pain medication:

Traction therapy with clTrac is highly effective for intervertebral disc problems and discomfort in the back and neck muscles: The new digital traction device from Zimmer expands the joints of the cervical spine, lumbar spine, and the extremities (lumbar) with metered tensile force.

This provides immediate relief to irritated nerves and the surrounding tissue can regenerate and heal.

Indication-based with software-controlled setting parameters

You can regulate all parameters in small increments,

1 to 99 minutes and 0.1 Kg to 90Kg and switch between digital and mechanical control.

Touch screen display for ease of operation.

16. Decompression Therapy System

DECOMPRESSION THERAPY



GRAVITY ASSISTED SUPINE



ANTALGIC POSITIONING



EXTENSION TREATMENT



FLEXION TREATMENT



Lumbar...Prone...Supine...Flexion...Inversion...Vibration! Side Lying, Cervical

Gravity Assisted Supine - ONLY Decompression Table featuring a bolster-less leg elevation with pelvic tilt which pre-tensions posterior elements.

Antalgic Positioning: Allow for the safe and comfortable treatment of acute and antalgic patients who exhibit non-weight bearing relief postures.

Extension and flexion in the lumbar spine

Axial lateral pulls, lumbar & Cervical for lateral discs

Bolster less leg elevation

Treat Thoracic problems... unload the "entire spine" equally by un-weighting with inversion.

With a centre-section **pelvic drop** we can now address SI joint fixation/asymmetries as well as the common PI/AS

Powered Caudal Sections: Controlled by 3-position hand switch (elevation, thoracic elevation and lumbar elevation/flexion)

The Passive Tensioning Reactive Orthopedic Spring controls X-Axis Table motion. Enhance decompression without added force. Tension can be matched to patient morphology.

Decompression to the **Cervical Spine**- mid-section elevation allows full support to the lumbar spine while lowering Thoracic kyphosis.

Enables a full range of cervical angulations

Allow cervical discs to migrate centrally without an increase in muscular tension.

CARPAL, HIP & WRIST Traction KIT